

# Steel | Plant | Technology

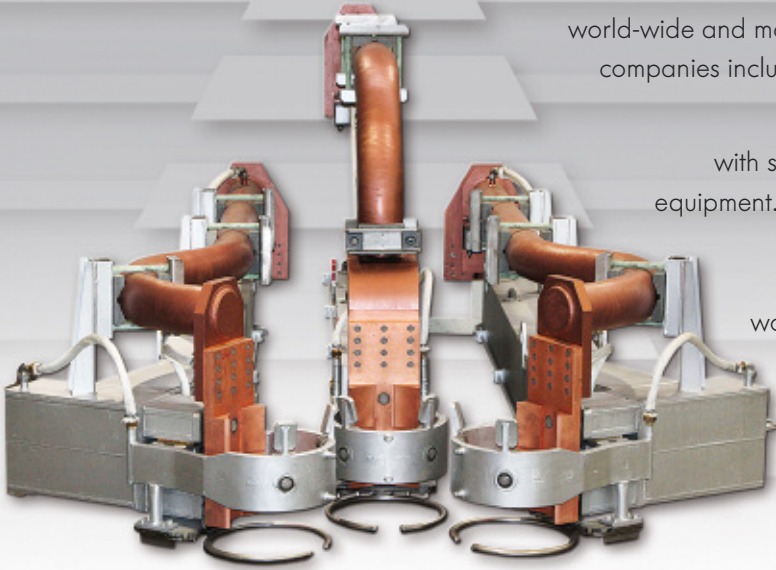
...innovative solutions · all from one hand



BK-Services GmbH is supplier of steel plant equipment to world-wide and most productive customers. The Group is an affiliation of several companies including one of the largest machine centers in southern Germany.

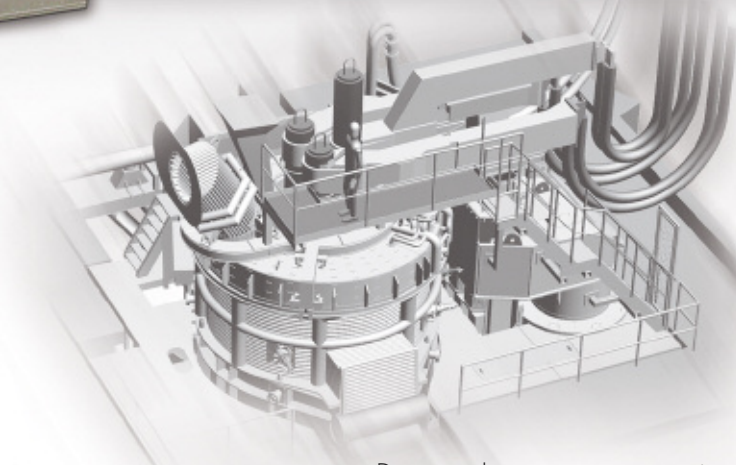
We maintain the highest degree of experienced personnel with superior knowledge in design and manufacturing of steel plant equipment. The very first set of copper current conducting electrode arms was mechanically and electrically developed by several of our engineers. They were later involved with the completion worldwide of over 200 sets of current conducting electrode arms.

Over the years numerous ladle furnaces and EAF turnkey projects were implemented, resulting in supreme productivity.



#### BK-SERVICES GmbH DESIGNS, MANUFACTURES AND SUPPLIES THIS RANGE OF EQUIPMENT:

- Complete Turn Key Electric Arc Furnace (EAF) Projects
- Complete Turn Key Ladle Metallurgy Furnace (LMF) Projects
- Foundry Furnace Projects (Casting)
- Furnace revamps and modifications
- Steel Ladles, Scrap Buckets, Transfer Cars
- Copper Current Conducting Electrode Arms – CCEA's
- Furnace Hydraulic Cylinders and Hydraulic Systems
- Burner & Lance Systems including Valve Trains
- MMI Level 1 & 1 1/2
- Supply of all kinds of machined components –

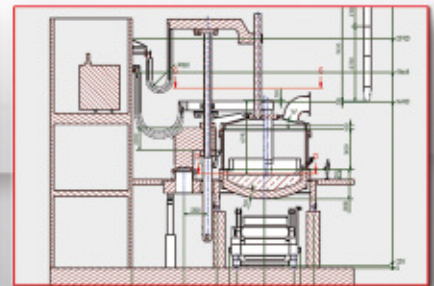
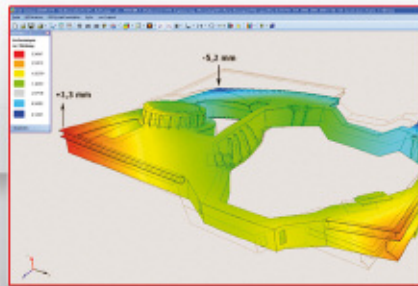


**BK-Services** is one of the most experienced and recognized suppliers with superior advantage in all areas of design, manufacturing, including installation & commissioning and troubleshooting.

We offer fast and committed service and short deliveries for all necessary products in and around your steel works.

Due to the recent restructuring of BK-Services and new manufacturing locations we were able to substantially streamline production and reduce overhead.

These savings are given back to our clientele with short delivery times at some of the lowest prices on the market.



## CONTACT...

**Intecs**  
International Technologies Inc.  
4960 Fish Pond Rd  
Salisbury, N.C. 28146

Direct Tel.: (704) 633 - 6082  
Mobile Tel.: (704) 957 - 8196  
Mail: erwin@intecsinc.com  
Web: www.intecsinc.com

